

ボールレンズ

大量生産でも安定した品質をお約束します。

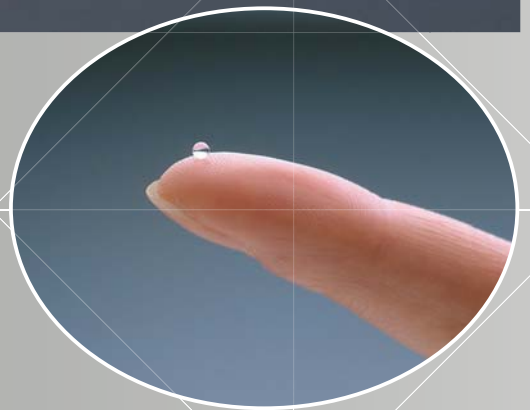
- 加工難易度の高いCaF₂や摩耗度700以上の軟質材、サファイア・石英といった硬質材での加工可能
- 100万個/月を越える大量生産にも応じます

用途: 非球面レンズ用プリフォーム、光通信、センサー、内視鏡等の対物レンズ他

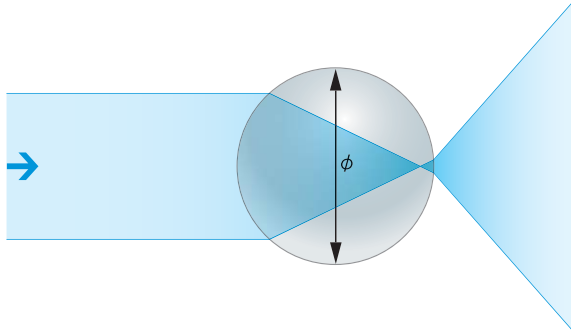
We offer mass production that delivers consistent quality.

- Ball lenses can be processed using difficult-to-process CaF₂, soft materials with a wear rate of more than 700, or hard materials such as sapphire and fused silica.
- We can manufacture over one-million ball lenses per month.

Application: Pre-form for aspherical lenses, as well as objective lenses for optical communication, sensors, and endoscopes

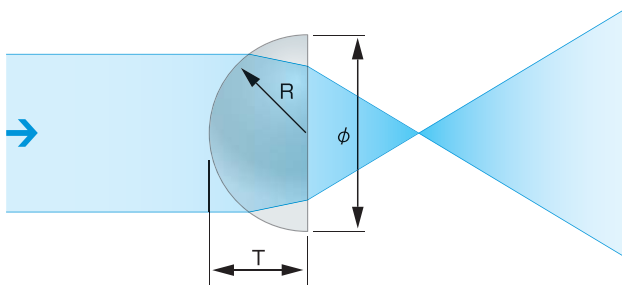


Ball Lens



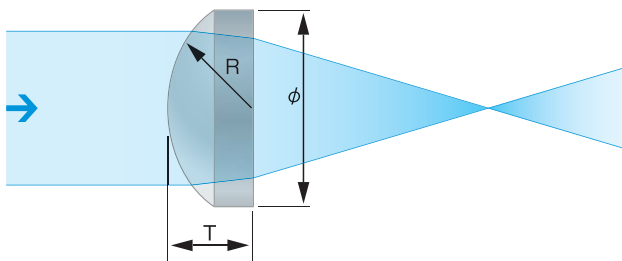
Material: Optical Glass, Fused Silica, CaF₂, Flexible Glass (Abrasion ≤ 500)
 ϕ : 0.8~10mm
 Sphericity: 0.001mm \leq
 S/D: 10/5

Micro Half Cut Lens



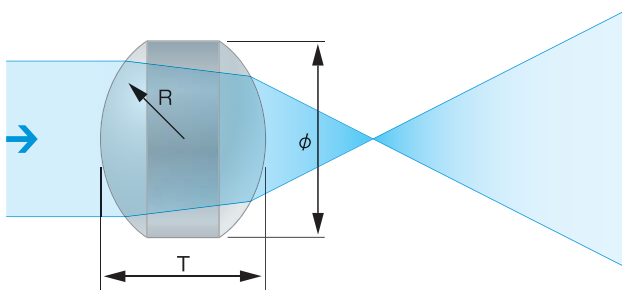
Material: Optical Glass, Fused Silica, CaF₂ and Glass with Abrasion ≤ 500
 ϕ : 0.8~10mm ± 0.004 mm \leq
 R: 0.4~5mm ± 0.001 mm \leq
 T: Same as R ± 0.01 mm \leq
 S/D: 10/5

Micro Half Cut Lens with edging



Material: Optical Glass, Fused Silica, CaF₂ and Glass with Abrasion ≤ 500
 ϕ : 0.5~9mm ± 0.015 mm \leq
 R: 0.4~5mm ± 0.001 mm \leq
 T: 0.3~5mm ± 0.01 mm \leq
 S/D: 10/5
 Centering Error: 2 minutes \leq

Drum Lens with bi-convex surface



Material: Optical Glass, Fused Silica, CaF₂, and Glass with Abrasion ≤ 500
 ϕ : 0.8~10mm ± 0.015 mm \leq
 R: 0.4~5mm ± 0.001 mm \leq
 T: 0.8~10mm ± 0.04 mm \leq
 S/D: 10/5
 Centering Error: 2 minutes \leq

※硝材、ご希望仕様により上記仕様は変わります。まずは、お問い合わせください：www.mflens.co.jp
 * The specifications described above may vary, depending on the glass materials and desired specifications.
 For more details contact us at the following address: www.mflens.co.jp/en